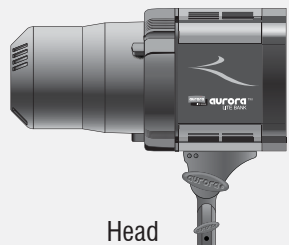


Fusion EUPO
Professional Lighting System

FBL-300 / FBL-600 / FBL-900 / FBL-1200

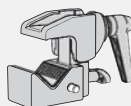
1. Parts



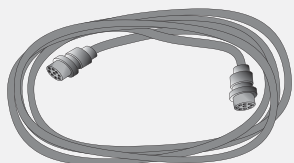
Head



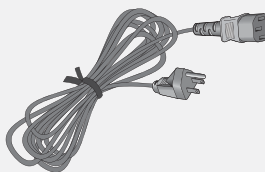
Body



Clamp



Connection cord



Power cord



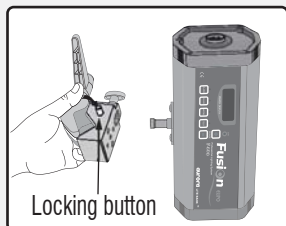
Sync cord



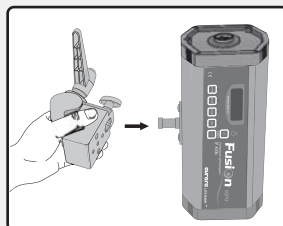
Modeling lamp

2. Set up

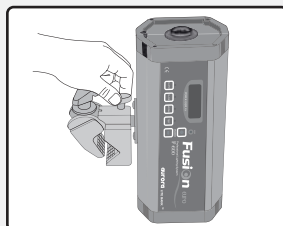
A. Attach clamp to body



Locking button

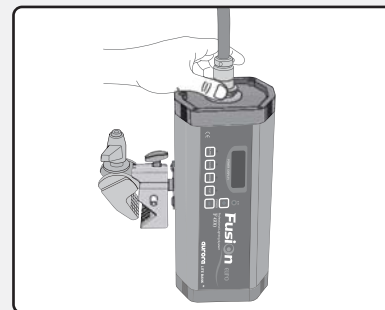


Insert clamp to spigot on the body while pressing a locking button

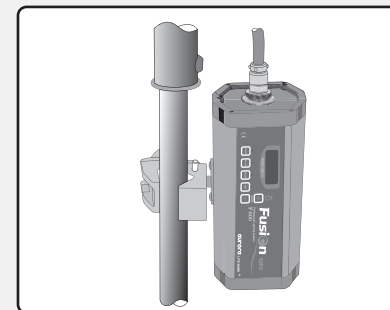


Screw a bolt on top of the clamp

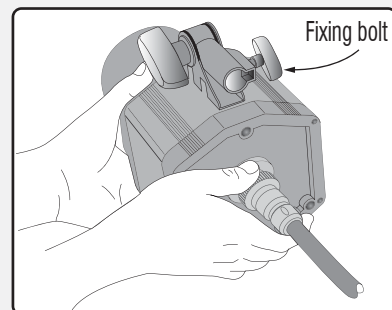
B. Insert one end of connection cable to body



C. Attach the body to a boom stand using clamp

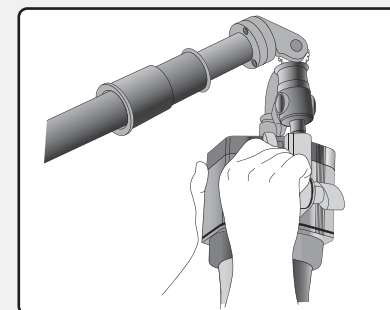


D. Connect the other end of cable to head

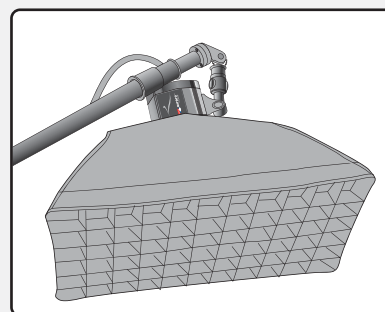


Fixing bolt

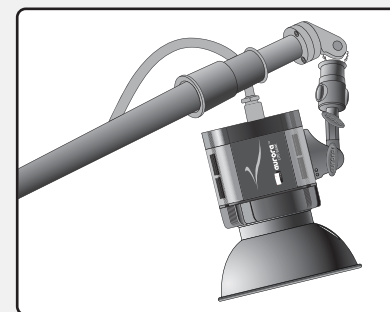
E. Fix the head to a boom arm using fixing bolt



F. Use accessories as per your preference



softbox with honeycomb grids



reflector