

G-400 / G-600 / G-800

GENESIS

Contents

1. Before use
2. Parts
3. Function of control panel
4. Features
5. Operation
6. Other items
7. Specification
8. Manintenance
9. Trouble shooting



1. Before use

This flash is a very precise piece of photographic equipment. Therefore, instructions must be read thoroughly before use.

1. Input voltage should be checked before use.
2. Do not move or shock the unit when power is on.
3. Connect to the properly functioning grounded 3-pin receptacles only.
4. Attach or detach reflector, snoot, or other accessories only after halogen lamp has been turned off and cooled down.
5. Do not keep the halogen lamp on when using snoot for a long periods of time.
When it is over 300W the snoot can greatly overheat.
6. Honey comb grids can be used with halogen lamps up to 300W.
A modeling lamp over 300W will burn or damage honey comb grids.
7. Use a softbox made of only heat resistant materials.
Most of the Aurora softboxes are designed to use with the Genesis unit.
8. Do not store or use under humid or moist conditions for an extended amount of time.
9. Keep this equipment out of the reach of children.
10. Keep the subject minimum 1m far from the flash.
11. Rated maximum ambient temperature : 25°C
12. Don't use with cracked glass dome.
13. Lamp should be changed if it has become damaged or thermally deformed.

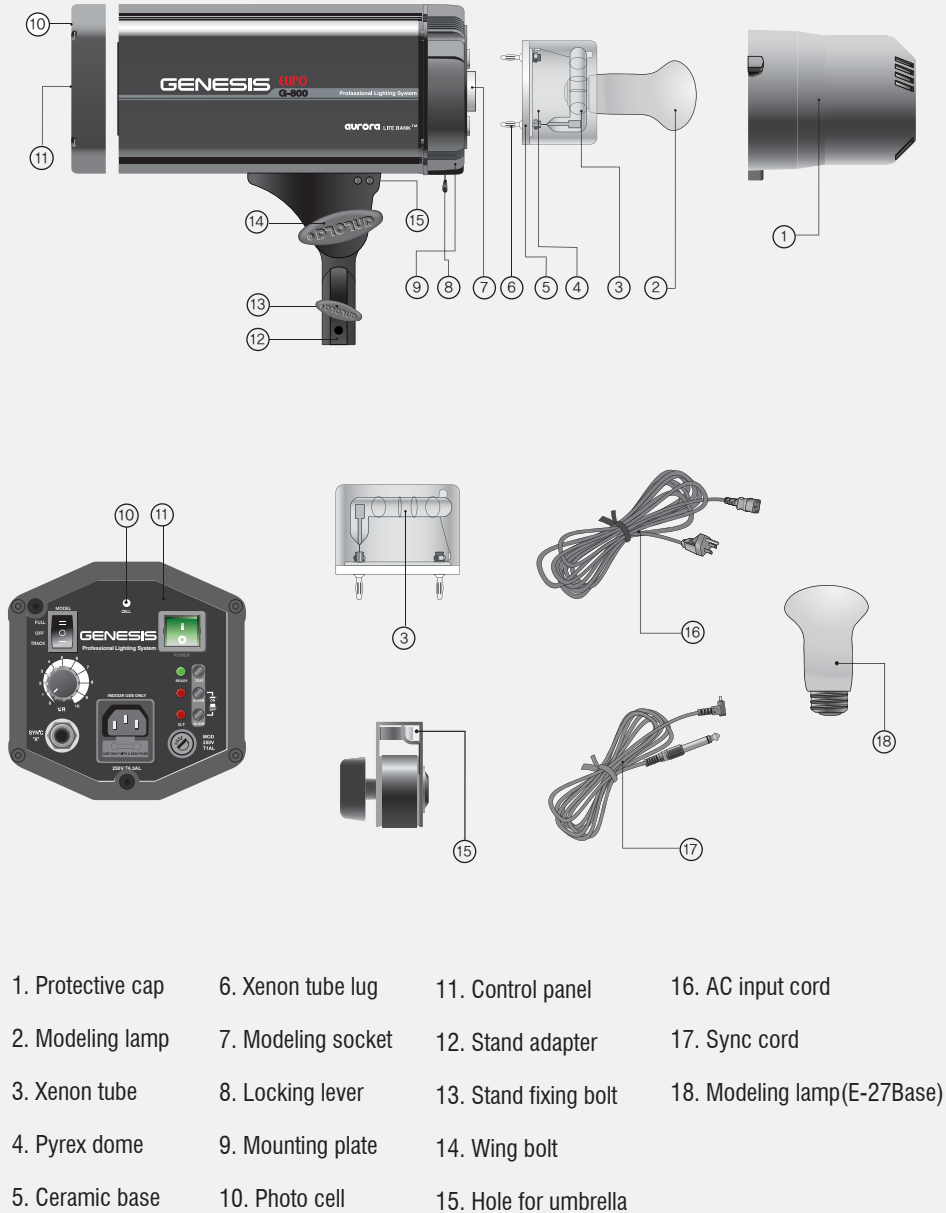


aurora Lite Bank **aurora** Lite Bank™

741-1 Sangyeck-dong, Buk-gu, Korea Tel : (82-53) 384-9874 Fax : (82-53) 384-9886,
For product consulting, call us (82-53) 384-9870 www.alb.co.kr e-mail : alb@alb.co.kr

2. Parts

<EURO Type>



- | | | | |
|-------------------|--------------------|-----------------------|-----------------------------|
| 1. Protective cap | 6. Xenon tube lug | 11. Control panel | 16. AC input cord |
| 2. Modeling lamp | 7. Modeling socket | 12. Stand adapter | 17. Sync cord |
| 3. Xenon tube | 8. Locking lever | 13. Stand fixing bolt | 18. Modeling lamp(E-27Base) |
| 4. Pyrex dome | 9. Mounting plate | 14. Wing bolt | |
| 5. Ceramic base | 10. Photo cell | 15. Hole for umbrella | |

Warranty Card

For warranty, please fill out this form and mail to Aurora Lite Bank Co.,
741-1 Sangyeok-dong, Buk-gu, Dae-gu, 702-101, Korea or fax to +82-53-384-9886.

Name			
Street Address			
City			
State/Province	Zip Code		
Country			
Phone Number	Fax Number		
E-mail Address			
Purchase Date			
Where did you purchase this product?			

Aurora Lite Bank warrants this product to be free of defects in materials and workmanship for a period of 12 months from the date of purchase.

We or our authorized service centre will repair or replace this product without charge with respect to the parts and labor, providing our examination indicates that functional defect exists under normal usage.

This warranty, however, does not include damage caused by the following reasons and repair or replace for defects due to the followings will be charged.

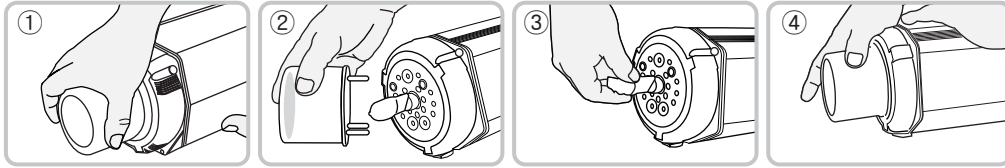
- Abuse and improper handling
- Improper maintenance
- Unauthorized repairs or modifications
- Natural disaster such as flood, moisture or animal damage
- Defective connection tools
- When wasting parts; modeling lamp, soft box, flash tube, synchro cord, connecting cable, photo condenser need to be replaced

This warranty is valid only for the original owner and applies to customers who properly fill out and return this warranty card.

※ This product can be modified For better quality and function without prior notice.

8. Maintenance

1. How to replace a flash tube or halogen lamp.



- ① Hold Pyrex dome of flash tube with one hand while holding a flash head with the other hand.
- ② Pull out the glass dome from the flash head. Because it is firmly fixed, you may try to detach it little by little, rather than pulling it all at once.
- ③ Screw out the halogen lamp wrapping with a soft fabric. Touching a halogen lamp with bare hands can shorten the life of lamp. For optimum life of the bulb do not leave fingerprints or stains on the lamp. If the bulb is dirty you must clean it with a soft fabric cloth. It is recommended to wear gloves throughout the process.
- ④ Replace to a new lamp and replace the glass dome over the flash tube and press it firmly towards the flash head.

2. How to replace a fuse

- First pull out the electrical cord.
- Open up the fuse holder with the appropriate screw driver and take out the fuse.
- Replace the defective fuse with new one identical to the original.

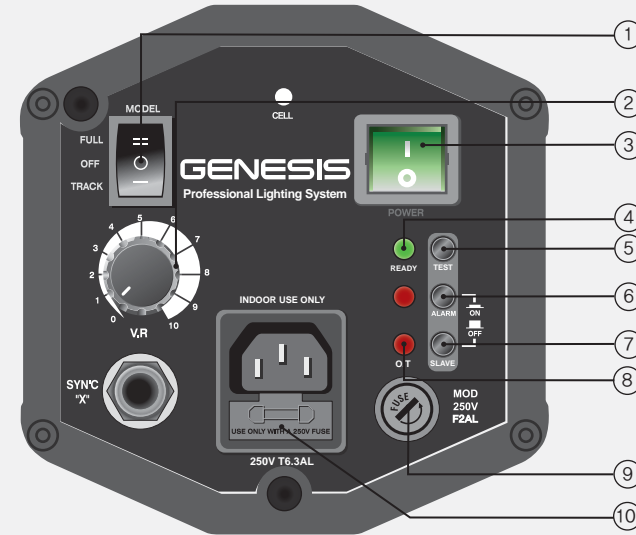
3. How to keep flashes

- Place the protective cap while carrying or when not in use.
- To clean the glass dome and flash tube use a soft cloth. Dust can damage flash tube.

9. Trouble shooting

SYMPTOM	POSSIBLE CAUSE	SOLUTION
No synchronization through photo cell	Slave is off	Make sure slave is on.
	The light does not reach the photo cell.	Adjust the flash position where the light can reach to the photocell
	Ambient lights are too bright	Isolate the flash from the other light sources such as the sun. Cover up part of photo cell which is exposed to too bright light source using thick paper
Problematic synchronization using the sync cord	Dust or dirt on the sync cord jack	Remove dust or dirt
	Broken or bad connection of the cord	If the flash fires fine by test button, then replace the sync cord with new one
Continuous beeping	Possible problem with charging	Check the supply input voltage is correct and not lower than required.
	Overheating	Check if the cooling fan normally operates. Cool the flash off and then use again.
No operation	No electricity	Check if the electricity cord is properly plugged in. Change a fuse.
Others	Please consult with authorized A/S center, dealers or manufacturer.	

3. Functions of Control Panel



- 1. Modeling control** : three modes are available, full, off and track.
- 2. Power control** : stepless increment from 1/12 f-stop to full
- 3. Power switch** : on/off
- 4. Ready** : when charged, green lights up and while charging, red lights up
- 5. Test control** : the test button will trigger the flash when pressed. It will also serve to dump excess power.
- 6. Alarm** : on/off button for audible alarm
- 7. Slave** : on/off button for light sensor
- 8. O. T** : This indicator turns on and starts beeping when circuit boards are over heated. Whole system will stop functioning except cooling fan and will automatically restart operating when the system is cooled down.
- 9. Fuse for modeling lamp** : 250VF/2AL
- 10. Spare fuse for flash** : 250VT/6.3AL

4. Features

1. Housing made of Aluminum and fiber glass protects circuit boards inside from impacts.
2. One touch locking system makes it easier to replace a reflector and a mount ring.
3. Flashing parts are divided into two sections: ceramic base and glass dome. User can easily replace a flashtube covered with glass dome himself.
4. Krypton lamp can last up to 2,000 hours.
5. Anti-frost and anti-static circuitry enhances the unit's safety. Cooling fan and anti-overheat circuit make longtime-shooting possible.

5. Operation



1. Factory setting : All powers are off and lighting volume is minimized when a flash is released from the factory. First check the modeling light and power switch are turned off.



5. Adjust flash power which varies from 1/12 f-stop to full.



2. Connect power cord first and connect sync cord into their appropriate socket.



6. To dump excess power, press test button.



3. Turn on the power switch

7. Alarm: To turn on alarm, please press alarm button.



4. Adjust modeling lamp mode.
Full: modeling lamp is set at full
Off: modeling lamp is off
Track: modeling lamp tracks with flash power

8. Slave: To turn on slave, please press slave button. Photo cell will serve to fire the unit whenever it sees the light from another flash.



9. When the flash is overheated, O.T indicator lights up, alarm starts beeping and system shuts down. After cooling, the system will automatically start up again. Otherwise, you may turn off the unit for cooling for a few minutes and turn it on again.

6. Other items



Color filter



Honey comb



Reflector



Barn door



Lite panel



Lite disk



Soft box



Speed ring



Umbrella



bag for flash



bag for stand



Stand

7. Specification

SUBJECT	MODEL	G-400	G-600	G-800
Power range, Joule/Ws		35-400	55-600	75-800
Flash power variation		1/12~Full	1/12~Full	1/12~Full
Power increment		power control knob - stepless		
Recharging time		0.3~1.2 sec	0.3~1.5 sec	0.3~1.8 sec
Input voltage		AC110V 50/60HZ or AC220V 50/60Hz		
Safety fuse		250VT/6.3AL		
Modeling fuse		250VF/2AL		
Minimum exposure at 2m, ISO 100, T=1/60		4.09 f-stop	5.67 f-stop	8.03 f-stop
Maximum exposure at 2m, ISO 100, T=1/60		16.4 f-stop	22.3 f-stop	22.8 f-stop
Flash duration T=0.5		1/1200~1/2100 sec	1/850~1/1700 sec	1/700~1/1400 sec
Voltage stabilization		± 0.1%		
Color temperature		5600 ± 150°K		
Modeling lamp		150W halogen lamp (E11) or 100W krypton lamp (E27)		
Sync voltage		DC 5V		
Trigger		RF remote, Infrared remote, Sync cord, Photo cell, Test button		
Dimension		18x13x33cm	18x13x37cm	18x13x37cm
Weight		3.0kg	3.2kg	3.4kg
Housing		Die casted with Titanic Aluminum		
Plug-in flashtube		All models		
Cooling fan		All models		
Over temp indication		Alarm beeps		
Completed with		modeling lamp, power cord, sync cord, protective cap, spare fuse		