

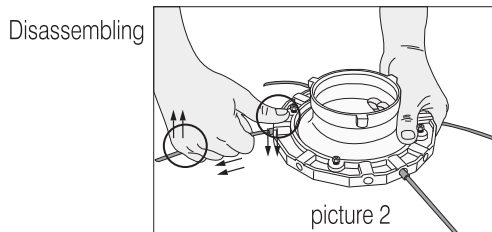
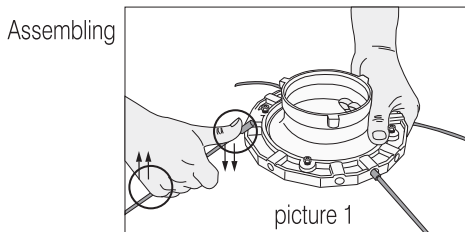
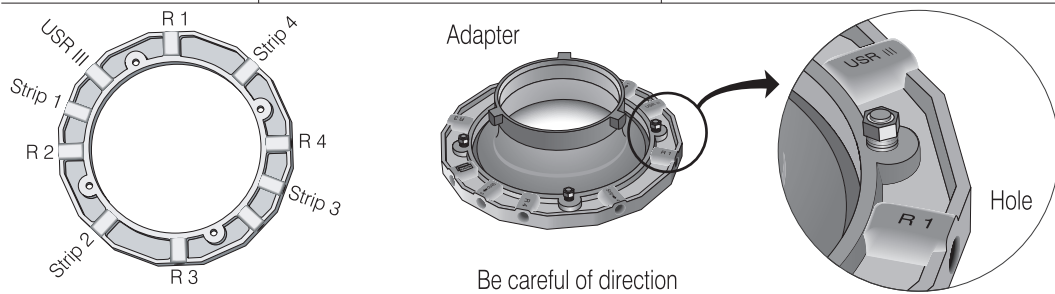
SOFT BOXES

1. Parts



2. Assembling order of speedring in the type of softbox

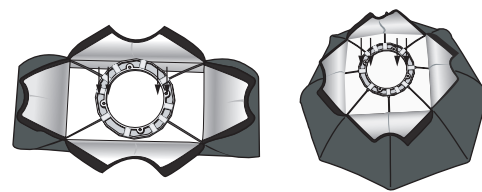
TYPES	MODEL	ASSEMBLING ORDER OF SPEEDRING
Rectangular	Square	LBDM77, LBD(R)45, 66, 88, 1010
	Regular Square	LBD(R)36, 68, 810, 912, 1014, 1218, 1420
	Strip	LBD(R)39, 412, 612, 418
Octagon	LBO(R)90, 120, 150, 213	



Before inserting rods to the speedring, please check names of hole on the speedring.

Insert rods in diagonal direction and when inserting the last one, press it and insert as attached picture 1

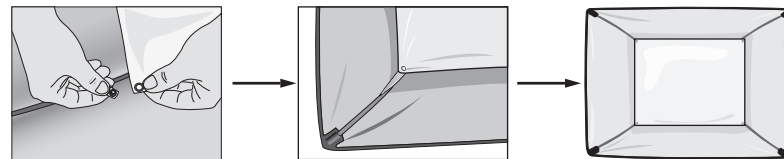
Take a rod and pull it by pulling upward as a picture 2



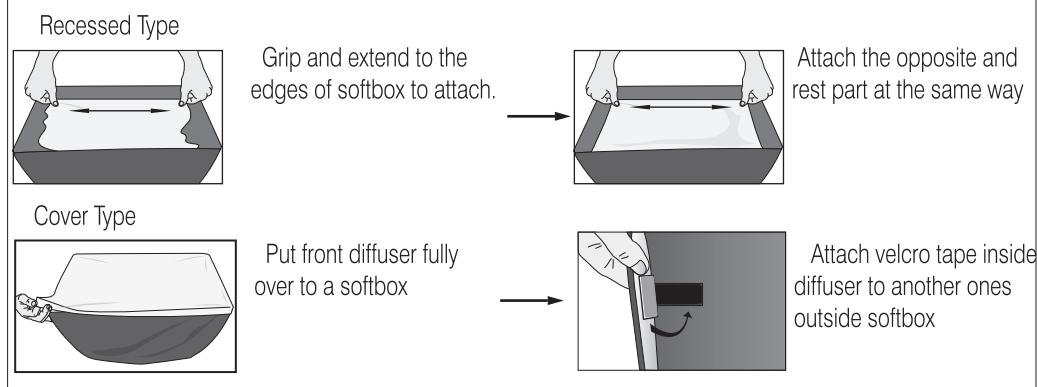
After assembling, put it on flat floor and press them. For rods to be inserted to the last

3. Rear diffuser (the same way applies to both cover type and recessed type)

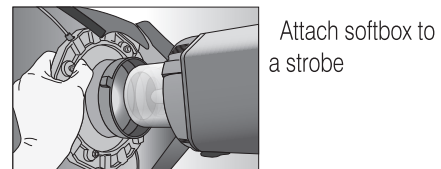
Attach hooks in the middle of rods of softboxes to the hooks of a rear diffuser



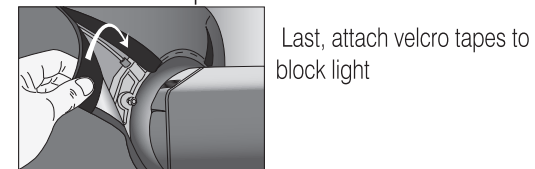
4. To attach the front diffuser



5. Putting strobe with softbox



6. Attach velcro tape at the back of softbox



7. Cautions

- Be careful not to pollute the screen of softbox made of fiberglass.
- Don't let the halogen lamp lighted up for a long time
- When using halogen lamp over 300W/s, please use fiberglass softbox

※ This product can be modified for better quality and function without prior notice.

741-1 Sangyeck-dong, Buk-gu, Korea www.alb.co.kr e-mail : alb@alb.co.kr

Tel : (82-53) 384-9874 Fax : (82-53) 384-9886, For product consulting, call us (82-53) 384-9870