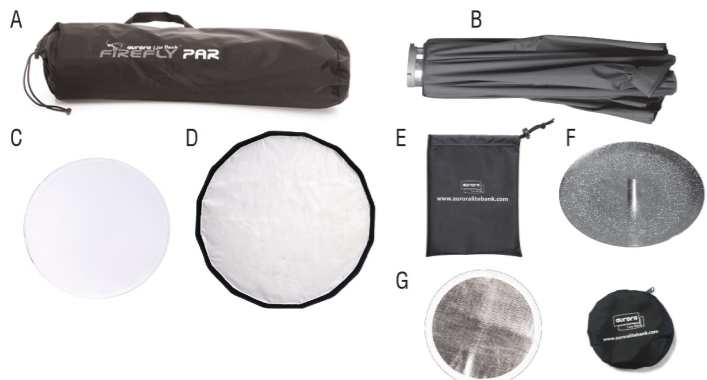
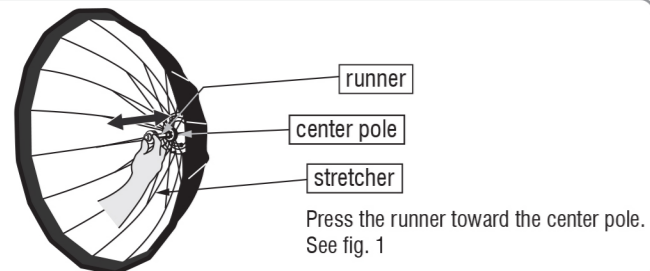
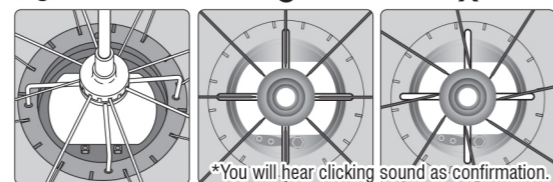
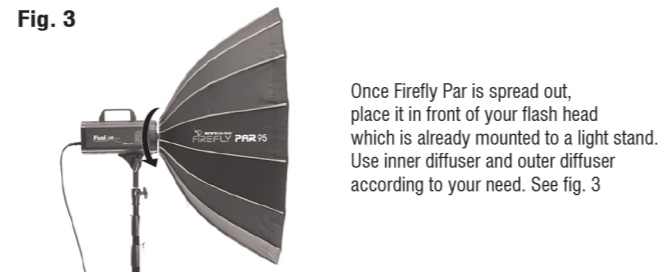
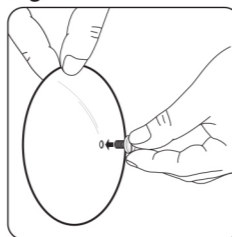
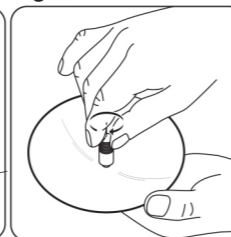
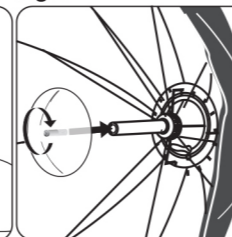



aurora Lite Bank®
FIREFLY PAR
1. Parts

- A. Carry bag for Firefly Par
 B. Firefly Par equipped with an adaptor ring for designated flash brand
 C. Twist foldable inner diffuser
 D. Outer diffuser
 E. Carry bag for inner & outer diffuser
 F. Optional deflector DFS20
 G. Optional bounce disc w/ 4 Velcro straps & a carry bag

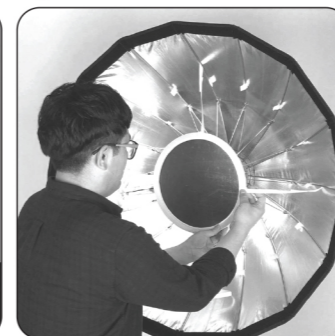
2. Setting up procedure**Fig. 1****Fig. 2****Fig. 3**

If an optional deflector is available,

Fig. 4**Fig. 5****Fig. 6**

Insert a tightening bolt into a hole in the center of deflector. See fig. 4
 Hold the deflector upside down and screw an extension rod onto the bolt. See fig. 5
 Screw an assembled deflector into the internal pole of Firefly Par. See fig. 6

If an optional bounce disc is available,

Fig. 7**Fig. 8**

Spring open a bounce disc out of carry bag and attach it to Firefly Par with provided Velcro strap. See fig. 7

The length of Velcro strap shall be adjusted as per your need. Cut out extra length if you find them too long for your need. See fig. 8

Fig. 9**Fig. 10**

To use Firefly Par for soft light, attach inner and outer diffuser instead of deflector. See fig. 9 and fig. 10

Fig. 11

Soft grids can be used in addition for more directional light. See fig. 11

**Fig. 12**

Insert your hand through a zipper to place a gel filter in front of light or pull out the runner for pack up.

To keep pace with our continued design and development this product may be modified by Aurora Lite Bank at any time.